



# Smart Parking System

## Complete Parking Management Solution



### Key Features

- Realpark LPR / ANPR based smart parking ecosystem
- Video parking guidance and car searching functions
- Cloud platform, mobile app, toll management, and group management modules
- Charging infrastructure and parking space lock options
- All original pages appended after the branded summary to preserve complete content

Redesigned technical summary in Hikvision-style table layout. All original pages are appended after this branded section to preserve the exact original model numbers, specifications, diagrams, and descriptions.

### Technical Specifications

Category	Parameter	Value
<b>System</b>	LPR / ANPR	All-in-one design integrating ANPR camera and algorithm
<b>Guidance</b>	Video Parking Guidance	Camera sensor with license plate recognition and parking guidance
<b>Charging</b>	AC Charging Pile	32A, 7kW, 220V input, IP54, 211mm x 345mm x 122mm, 4KG, 5m cable
	DC Fast Charging Pile	30kW / 60kW / 80kW / 120kW, 50VDC~950VDC, 52A~288A, ≥96% efficiency, IP54
<b>Parking Lock</b>	Special Lock for Charging Parking Space	Lifting height 420mm, descending height 75mm, IP67, -40■ to +85■
<b>Platform</b>	Core Modules	SAAS Cloud Platform, Toll Management, Group Management, Mobile App/Applets, Cl

# Seamless Parking

Transforming Your  
**Commuting Experience**

**Good Parking Experience for Driver  
Efficient Management for Operator**

# Analysis of Current Situation of Car Park Entry / Exit Management

## Current Status of Entrance and Exit Management



### Block up at Entrances and Exits

Driver need to take or swipe the card when entering and exiting, which takes a long time, and the efficiency of lane passage is low. It is easy to cause congestion at the entrance and exit during peak traffic flow..



### Payments Trouble

Drivers often cannot park the vehicle accurately at the card pick-up location, which is especially inconvenient in rainy weather.



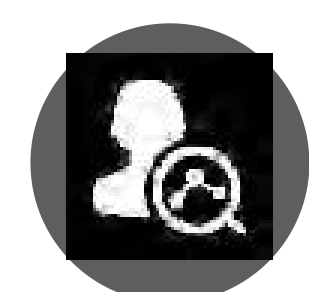
### Security Risks

During the process to take and swipe the card, the car often slips and stalls, causing dangerous some times



### Difficult to Manage

The parking lot area is large, the level of intelligence is low, the information is isolated, it is difficult to share multi carpark info, and the management is difficult.



### Parking Fees Loss

There is no record of abnormal release and free release at the toll office, and the phenomenon of running and leaking is serious.

An aerial night view of a city skyline, likely Shanghai, with a complex digital network overlay of glowing blue lines and nodes. The network consists of numerous interconnected points and lines, suggesting a data-driven or smart city infrastructure. The city lights are visible in the background, and the water of a river or bay is in the foreground.

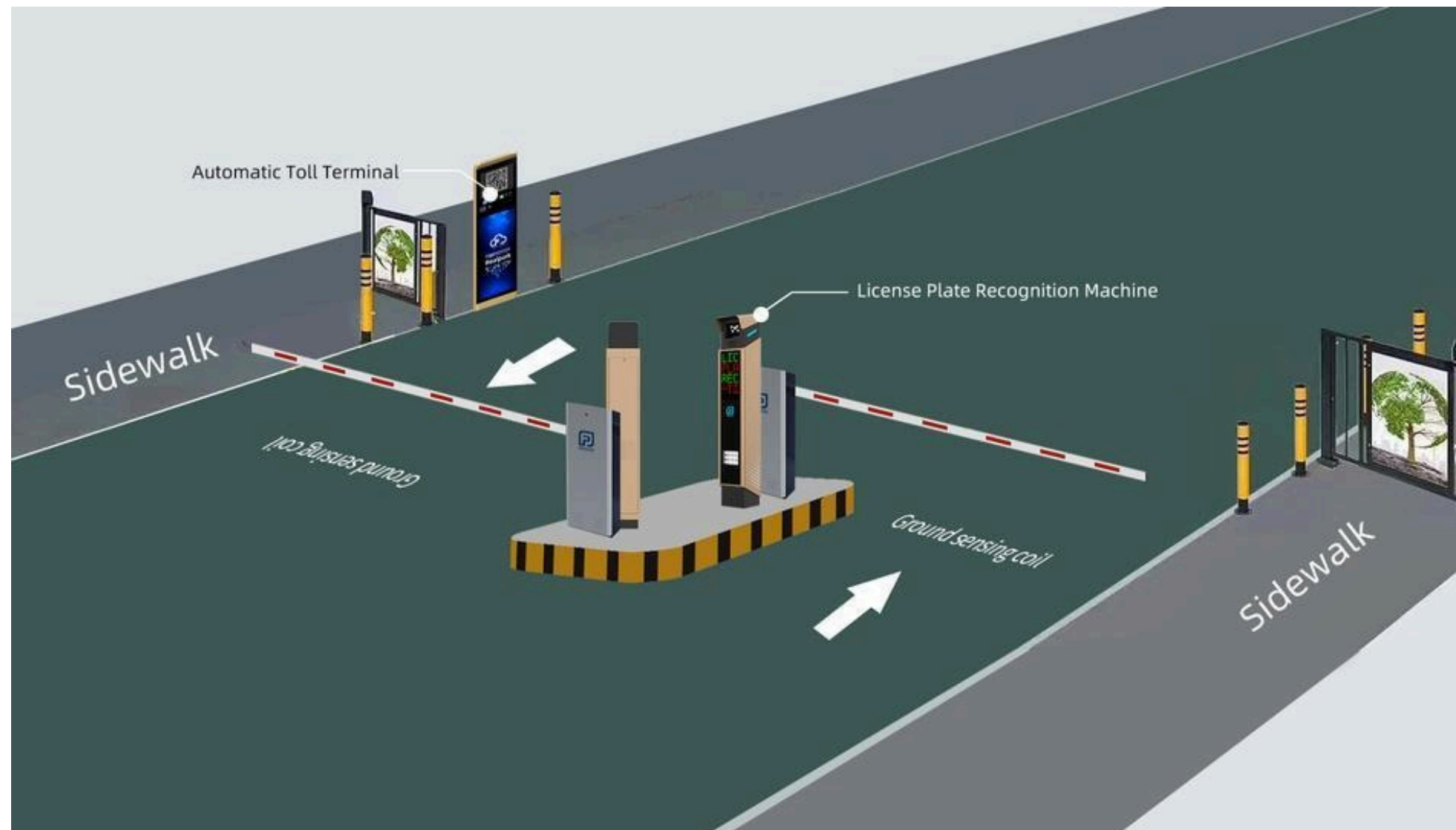
**How to create a better parking experience of drivers?  
(Parking is one of experience of life)**

**How to solve the operational problems of the carpark and improve the intelligent level?**

# Smart Parking Solution

# ANPR Parking Management System (Stand Alone)

- The most advanced license Plate recognition as the foundation to build a comprehensive mobility ecosystem .Realpark LPR not only streamlines entry and exit processes but also acts as a catalyst for creating a seamless and efficient mobility experience for operators and drivers.



## U Smart Parking Mangement

Video recognition, fast in and out, no congestion

## U Multi Payment Way

Multiple payment methods to cover difference needs.

## U Platform Intelligent Control

Provide a professional management platform to fully meet the needs of parking lot management

## U Mobile App

Customized developing the mobile app for users and operators.



**High Speed Barrier**



**Ticket Exit**



**Ticket Entrance**



**Pay Kiosk**



**POF**



**RPL-XY9**



**RPL-XY8  
+LCD screen**



**RPL-XYX1**



**RPL-XY8-H5B**

# Parking System Flow



1

**User Drives In**

AI Camera scan the car number plate and opens the barrier gate for entry.



2

**User Park**

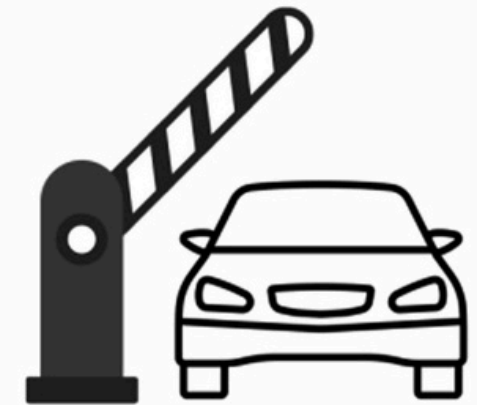
Car Entry Data is recorded and saved in the server.



3

**Payment Method**

User can select payment options to pay for parking fee.



4

**User Drives Out**

AI Camera scan the car number plate and opens the barrier gate for exit.

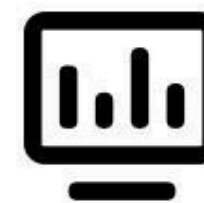


# Advantages of ANPL Parking Solution



## Non-stop Parking

ANPR based vehicle management solution ,  
automated and efficient vehicle passing flow



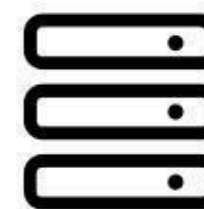
## Security

Multi-lanes monitoring 24/7 video  
Streaming for security purposes



## ALL in one Design

Integrates the ANPR camera, Algorithm A



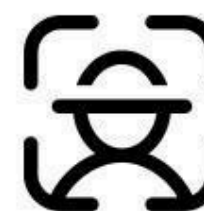
## Professional Management

Various of system records and reports like  
passing vehicle payment records  
Duty shift record , operation record ,discount  
record for real -time status trace and the  
operation analysis



## Cost-saving

All in one model is making the installation more  
easier and save time  
Simple management to save learning cost and  
labor cost



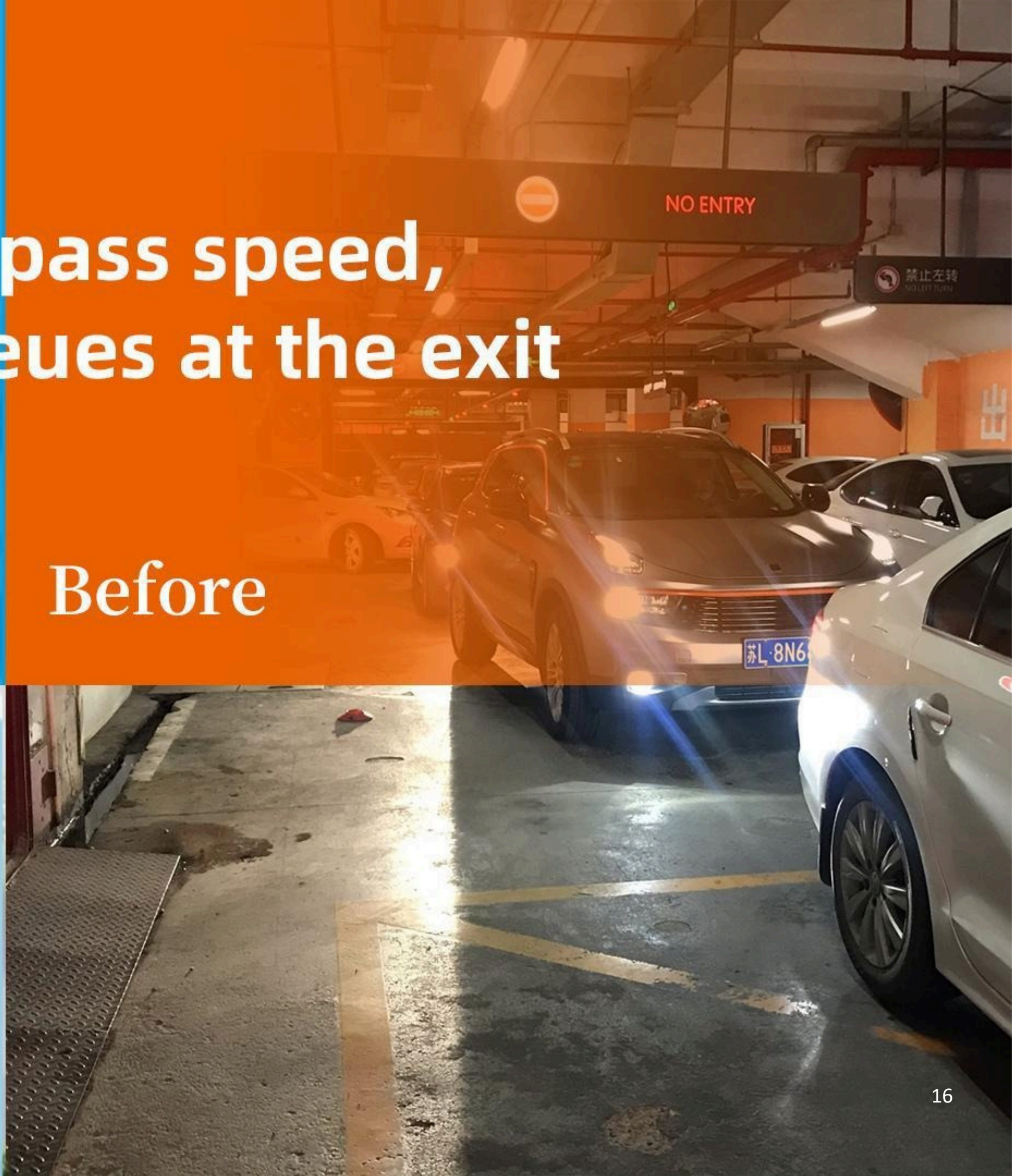
## Smart Access Control

The operator will be able to remotely  
control the entry and exit barrier gate by  
software webpage

Fasten exit pass speed,  
not in long queues at the exit

After

Before



# Cut Labor Costs

## Before:

Example--cashier salary:600USD/month,one carpark with 3 entrances 3 exits,3 shifts,4 cashiers/access,total 12 cashiers, so the total labor income is: **86400USD**

## After:

**0USD**

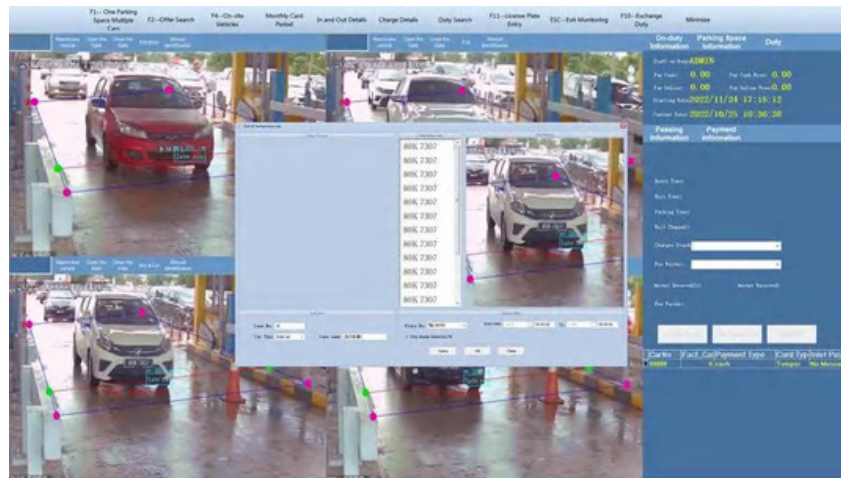
Total Labor Cost

**save many labor cost**



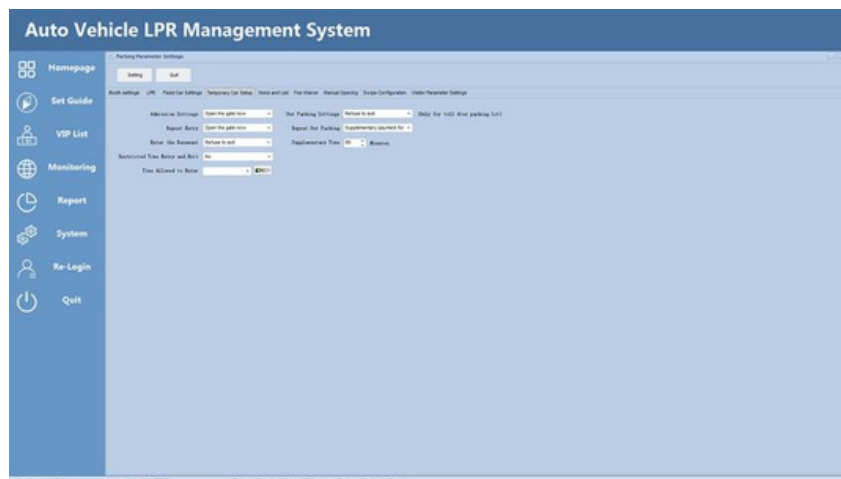
# Toll Station Management System

The toll management system is mainly used for carpark front desk charging management, providing driver with services such as pre payments or parking fee discount etc.



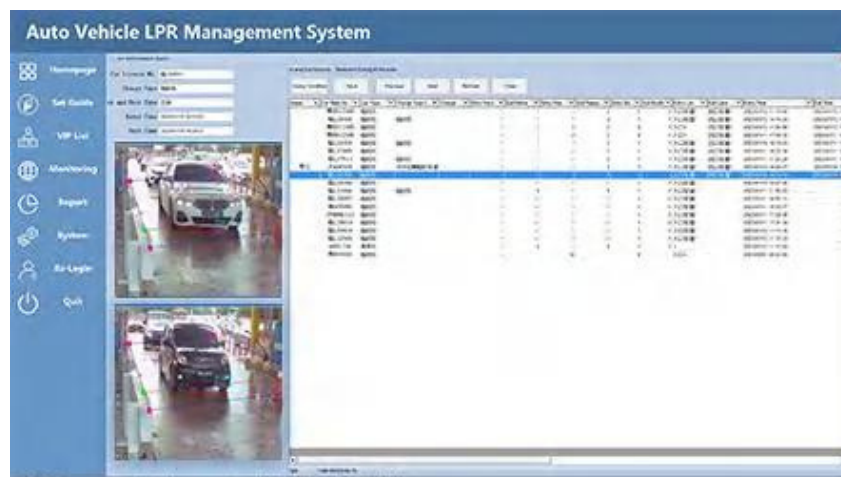
## Car Search

Support to find vehicle information by entering the license plate, scanning the entry ticket, and swiping the card; Display parking fee information, including license plate number, vehicle type, entry time, parking duration, amount receivable, etc.



## Car Info Supplement

When the system cannot find the valid entry information of the vehicle, it can manually fill in the entry information through the "Cannot find the vehicle" module for free settlement or fee settlement.



## Charge Details Report

Support for querying and counting the charge release records of the currently logged-in toll station users within a specified time period.

# Refined Reports, Provide Powerful Data Analysis Support for Decision-making

The system can automatically generate different reports such as financial reports, operation reports, abnormal release reports, and toll personnel reports.

Daily Report

Monthly Report

Abnormal Report

Recharge Report

# Group Control

- Provide group management platform for group users Uniformly query the parking lot data and centrally manage all parking lots. Need car park with 7x24 stable external internet.



- Ø Computing-based parking lot centralized service platform
- Ø Centrally control all parking lots;
- Ø The mobile phone pushes the corresponding parking information and data reports to Managers at all levels;
- Ø Big data analysis, decision support;
- Ø Early warning of equipment failure, License plate recognition and warning, etc.;



- License plate recognition camera:  
Image output :300W pixel JPEG  
minimum illumination :0.01Lux  
Aperture: Fixed aperture focal length :6mm  
wide Dynamic range :≥100dB  
Storage port: Supports SD2.0 Micro sD(TF)  
cards with a maximum capacity of 32G
- LED screen Size:  
160cm\*320cm (P4.75 two-color LED two-line portrait display)  
Resolution: Single LED module 64\*32 lattice
- Box size:  
Height 1360mm x width 200mm x thickness 200mm
- LED energy-saving supplement light



Champagne gold



Bright silver

## License Plate Recognition Equipment

- ① Two-color LED two-line portrait screen,  
running horse lamp text display in and out of the vehicle information;
- ② Cloud seat: support remote intercom, remote switching, remote video viewing and capture;
- ③ Ultra HD, ultra wide Angle camera, good night vision effect, recognition rate up to 99.9%;
- ④ Small and suitable body, beautiful shape, exquisite, unique;
- ⑤ Software installation and control is simple, data security is guaranteed;
- ⑥ High temperature baking process, surface toughened glass screen printing;
- ⑦ Independent research and development, production, domestic industry leading products.





# License Plate Recognition Equipment

- ① Two-color LED two-line portrait screen, running horse lamp text display in and out of the vehicle information;
- ② Cloud seat: support remote intercom, remote switching, remote video viewing and capture;
- ③ Ultra HD, ultra wide Angle camera, good night vision effect, recognition rate up to 99.9%;
- ④ Small and suitable body, beautiful shape, exquisite, unique;
- ⑤ Software installation and control is simple, data security is guaranteed;
- ⑥ High temperature baking process, surface toughened glass screen printing;
- ⑦ Independent research and development, production, domestic industry leading products.



● License plate recognition camera:  
Image output :300W pixel JPEG  
minimum illumination :0.01Lux  
Aperture: Fixed aperture focal length :6mm  
wide Dynamic range :≥100dB  
Storage port: Supports SD2.0 Micro sD(TF)  
cards with a maximum capacity of 32G

● LED screen Size:  
160cm\*320cm (P4.75 two-color LED two-line portrait display)  
Resolution: Single LED module 64\*32 lattice

● Box size:  
Height 1360mm x width 200mm x thickness 200mm

● LED energy-saving supplement light



Champagne gold



Bright silver





# License Plate Recognition Equipment



- General parameters: Protection level :IP42, certain dust-proof and waterproof function  
Working temperature :-10°C~ 60°C/ Working range : 5°C to 85°C  
Height 1450mm x width 340mm x thickness 210mm  
Power consumption :60W MAX  
Weight :≈18kg
- LED screen size :192mm\*192mm(P3 full-color LED four-line display)Resolution: Single LED module 6432 lattice

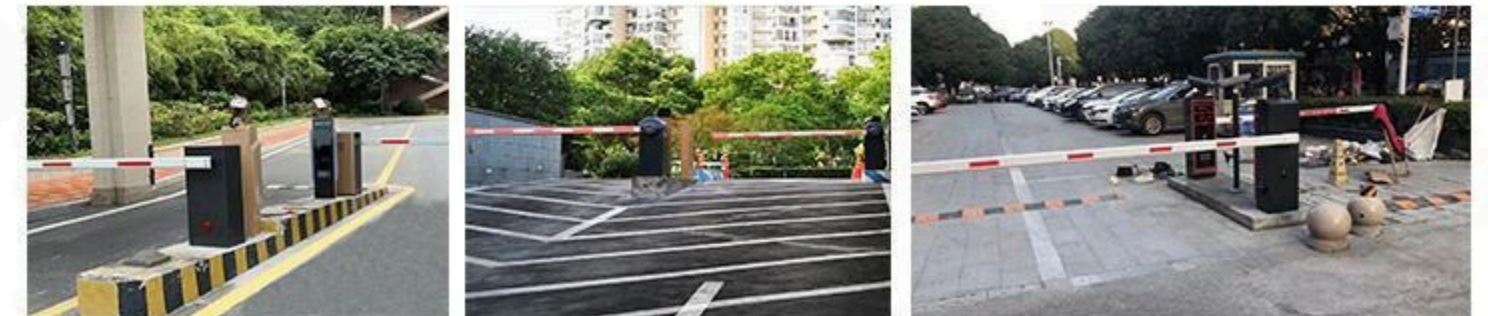


Champagne gold



Bright silver

- ① Humanized appearance design: External camera, protected from light and rain.  
4-Line LED display, suitable for human eye viewing angle;  
The fill light is inclined downward, only the license plate is viewed, not dazzling.
- ② Personalized and ingenious creation: Real materials, Exquisite workmanship and Originality;  
Full, delicate, atmospheric, and good color sense;  
Meet the needs of customers who advocate practicality and beauty!
- ③ Diversified scene applications: adapt to the needs of different scene angles:  
The camera recognition angle can be fine-tuned up, down,  
left and right to achieve the best recognition angle, with a recognition rate of over 99%.
- ④ LED 4-Line display, the display effect is bright and dazzling.





### RPH08-PLUS DC Servo Barrier Gate

Supply voltage: AC220V±10%50Hz

Card reading signal: switch value

Motor: DC servo motor 150W

Open Speed: 0.9s~1-3m, 1s~3s-3~4.5 meters  
For straight arm

Input voltage: 24V

Rated/peak current: 10A/30A

Human-machine interface: 4-digit LED, 4-digit button

Hardware protection: over-current protection,  
over-voltage protection,  
short-circuit protection

Input signal: gate opening, closing, stop,  
ground sensing, anti-smashing

Output signal: open position, closed position dry contact

Product size: 340\*308\*954mm



Champagne gold

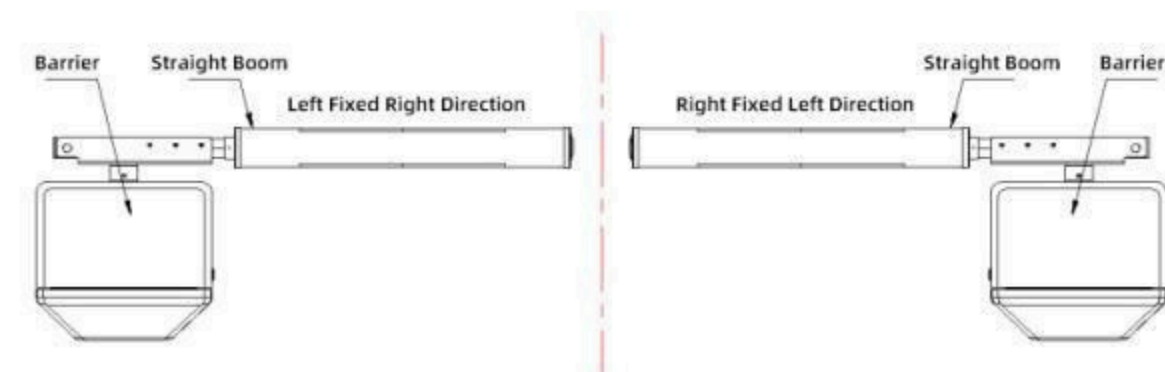


Bright silver

# Automatic Barrier Gate

## Functional Design

- ① DC servo motor, small size, large torque; elliptical straight rod [1-4 meters] standard rod length can quickly and smoothly rise and fall;
- ② Small and exquisite appearance, small footprint, simple and fashionable, high-end and calm color matching;
- ③ Adopt DC servo control technology to achieve precise and adjustable switching speed, reduce jitter, and make the gate rod run more smoothly and smoothly;
- ④ With a remote control interface, a remote control transmitter can be configured to control the raising, lowering and stopping of the electric brake lever;
- ⑤ It has an infrared detection interface and can be used with radar detectors to achieve anti-smash protection [requires additional switching power supply];
- ⑥ Supports gate opening counting function and unattended automatic closing function; supports RS232 or RS485 remote communication [customization required];
- ⑦ Add a traffic indicator light. When the light is in place, the top cover light will light up red; when the light is in place, the top cover light will light up green.





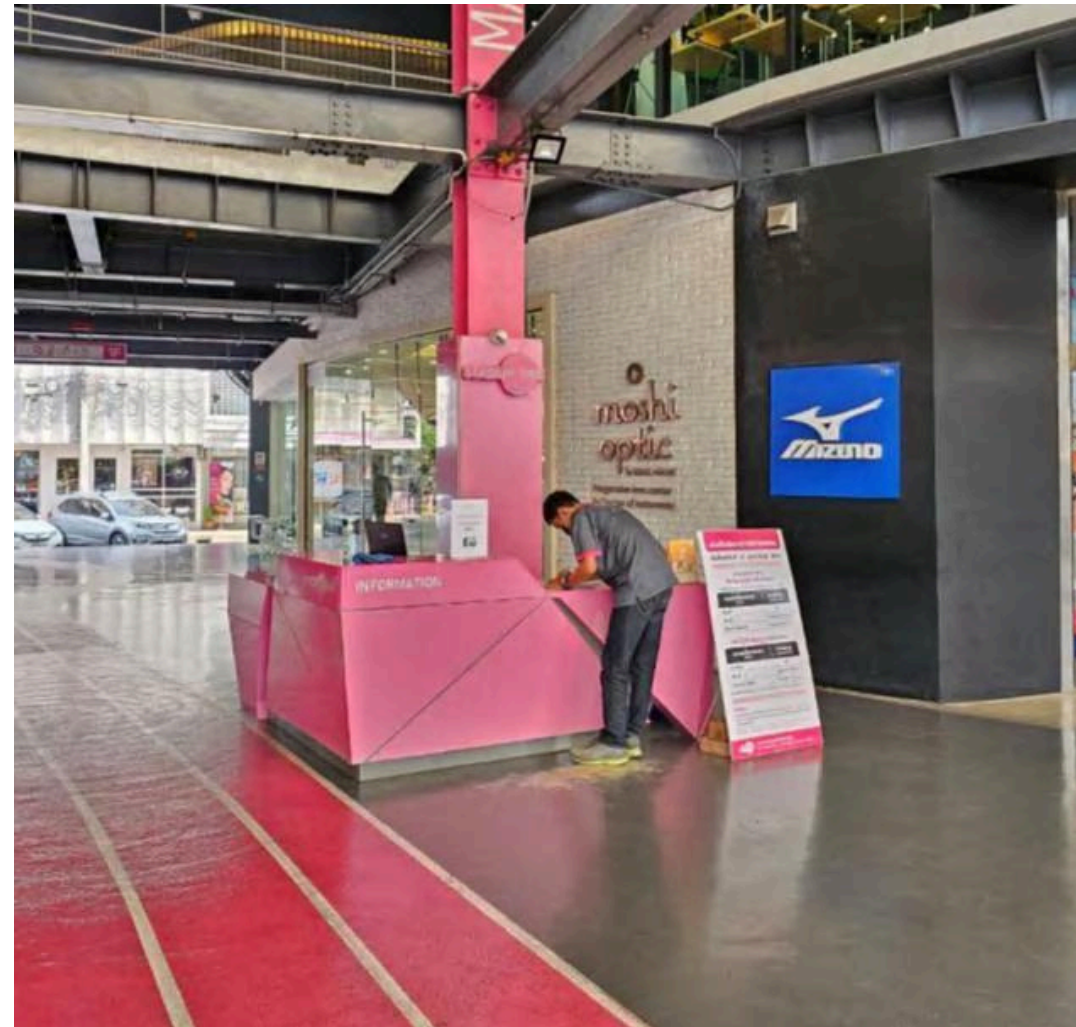
# Multiple Payment Ways

# Multiple Payment Methods, Enhance Parking Experience

- Large car park have heavy traffic flow. The traditional payments mode need pays parking fee at the exits, which leads to congestion . we provide convenient payment way to help the driver fast in and out , improves the parking experience, and increases carpark income!

## Manual Charge

- ρ Exit toll station .
- ρ Central toll station
- ρ Pay by PAD



## Auto Pay

- η Auto pay station
- η Pay by mobile  
(need integration )
- η ETC Payment  
(need integration)



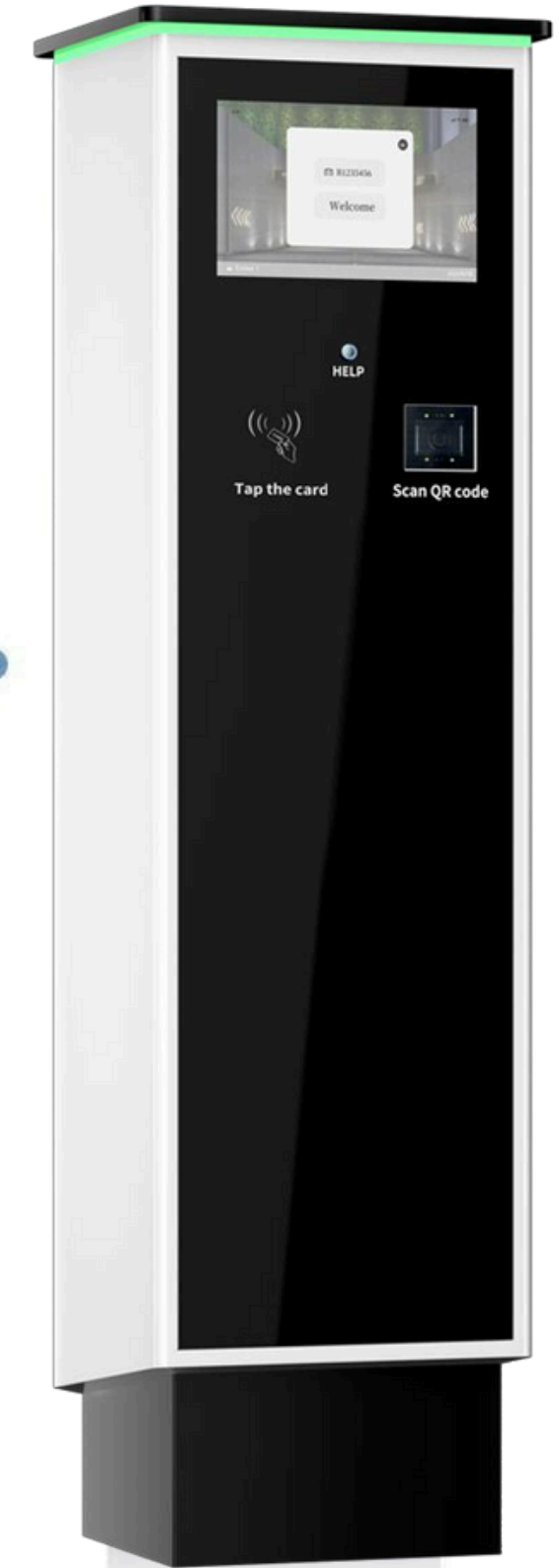
# Entry and Exit Card Ticket Station



Entry Auto Ticket Station  
RP-ENTRY-TS01

- Barcode printer for the printing of parking tickets.
- Barcode scanner for the reading of all types of parking tickets.
- Ethernet connection to Realpark System.
- Capacity of up to 5000 tickets.
- Thermostatically controlled heater with fan.
- Power supply with isolation switch.
- Declarations / Certifications CE, FCC, IC, CNRTLUS.

- POS Machine for Payment Credit Card In/ Credit Card Out.
- 2D Barcode scanner for the reading of all types of parking tickets.
- Industrial PC board.
- PC based platform provides simplified maintenance and allows easy system upgrades.
- Thermostatically controlled heater with fan.
- Power supply with isolation switch.
- Standard colours are Silver&Black.
- Any other colors available upon request.



Exit Auto Ticket Station  
RP-EXIT-TS02



- LED screen Size:  
15.6 inch high definition high bright LCD screen  
Resolution :1024 x 768
- Scanning gun:  
Light source :620nm visible diode;  
Resolution :2500 pixels  
Image sensor: linear image sensor (CCD);  
Minimum contrast ratio :≥30%  
Read code system :code128, EAN-13, Code39,UPC-A, etc
- Box size:  
Height 1360mm x width 380mm x thickness 210mm



Champagne gold



Bright silver

## Self-service toll machine

- ① push-button voice intercom, seeking manual help;
- ② Support wechat, Alipay and other third-party electronic payment
- ③ High definition, high light outdoor LCD display.
- ④ Can display the past car information.
- ⑤ Can display the payment QR code.
- ⑥ Support the main scan pay and be scanned pay parking fees.
- ⑦ High temperature baking process, surface toughened glass screen printing;
- ⑧ Independent research and development, production, domestic industry leading products.





# Self-service payment machine



- Barcode scanner for the reading of tickets. Installed PC processor - PC based platform provides simplified maintenance and allows easy system upgrades. Thermostatically-controlled heater with fan. Ethernet connection to Realpark System.

- Power Supply with Isolation switch  
BNR4-21B banknote recycling machine.  
1 loader 300 notes.  
2 cassettes for the recycling of up to 4 denominations.  
Safe 600 notes.

- ① Anti-vandal touch keys to cancel, select language, request a receipt and ask for help.
- ② Safety deposit box for cash protection.
- ③ Coin insertion slot. Bank note insertion slot (option).
- ④ Change (depending on option) given in coins and banknotes.
- ⑤ Receipt for payment issued automatically or on request.
- ⑥ Configurable payment of transit time and entry to exit grace period.
- ⑦ Payment for conference, event tickets and prepaid cards which can be used at entry and exit for a pre-determined period.
- ⑧ Payment of pass-card subscriptions and renewals for use in authorized parking areas.
- ⑨ Payment for prepaid top-up cards.
- ⑩ Real time transmission of alerts and transactions.



# Car Guidance system

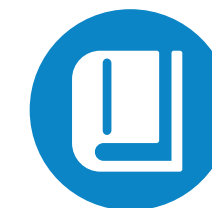
# Outdoor Parking Guidance System



With outdoor waterproof parking sensor, the parking guidance system can help the motorist to find the available parking space easily.



Guidance

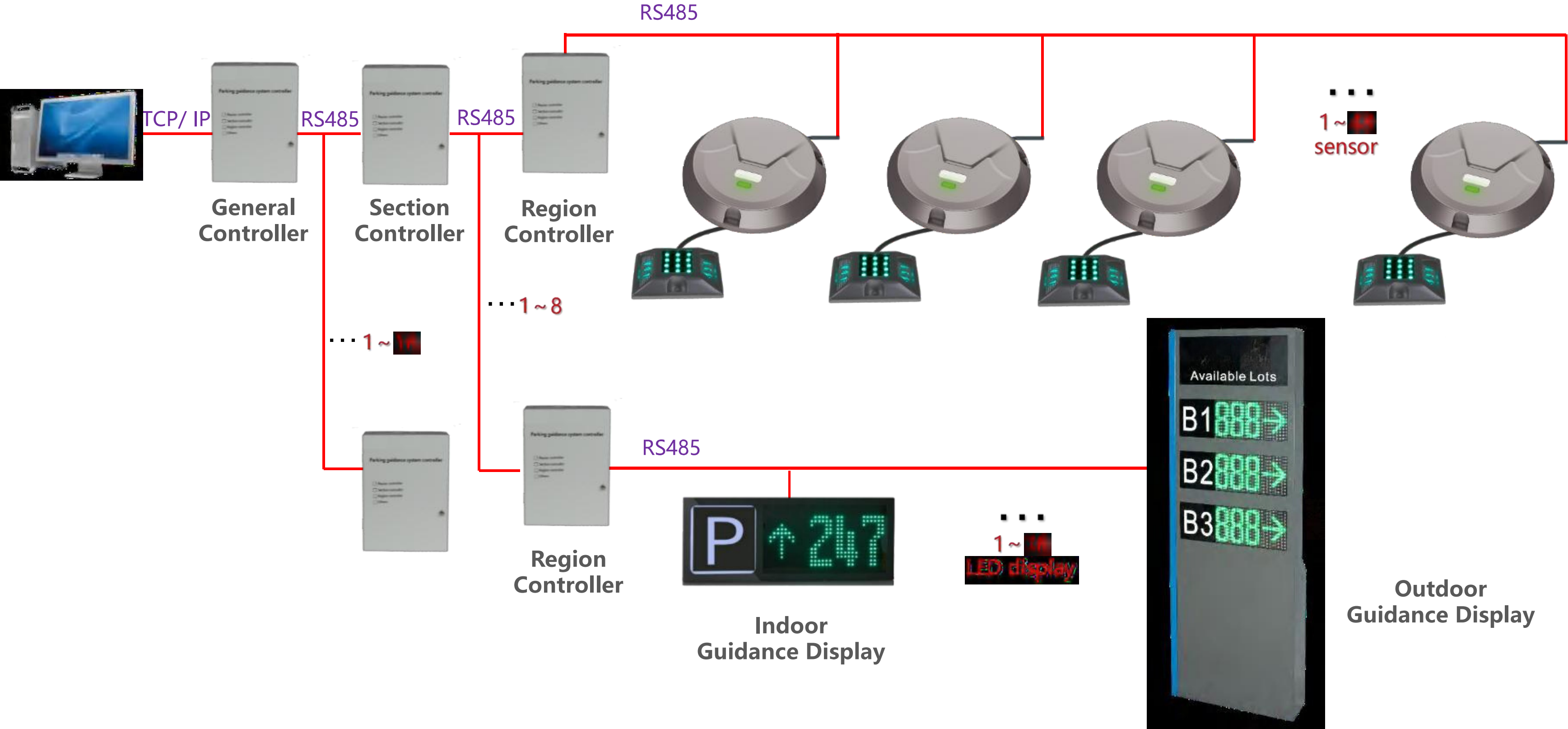


Available Parking Space

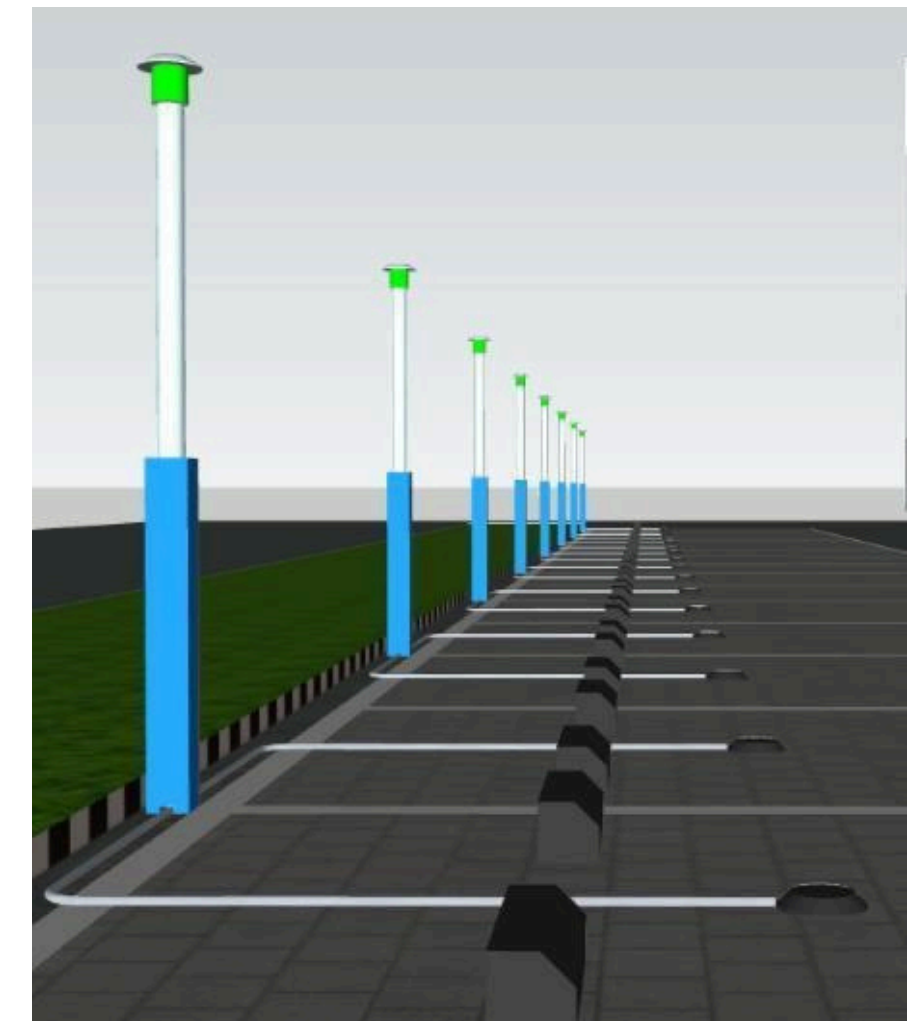
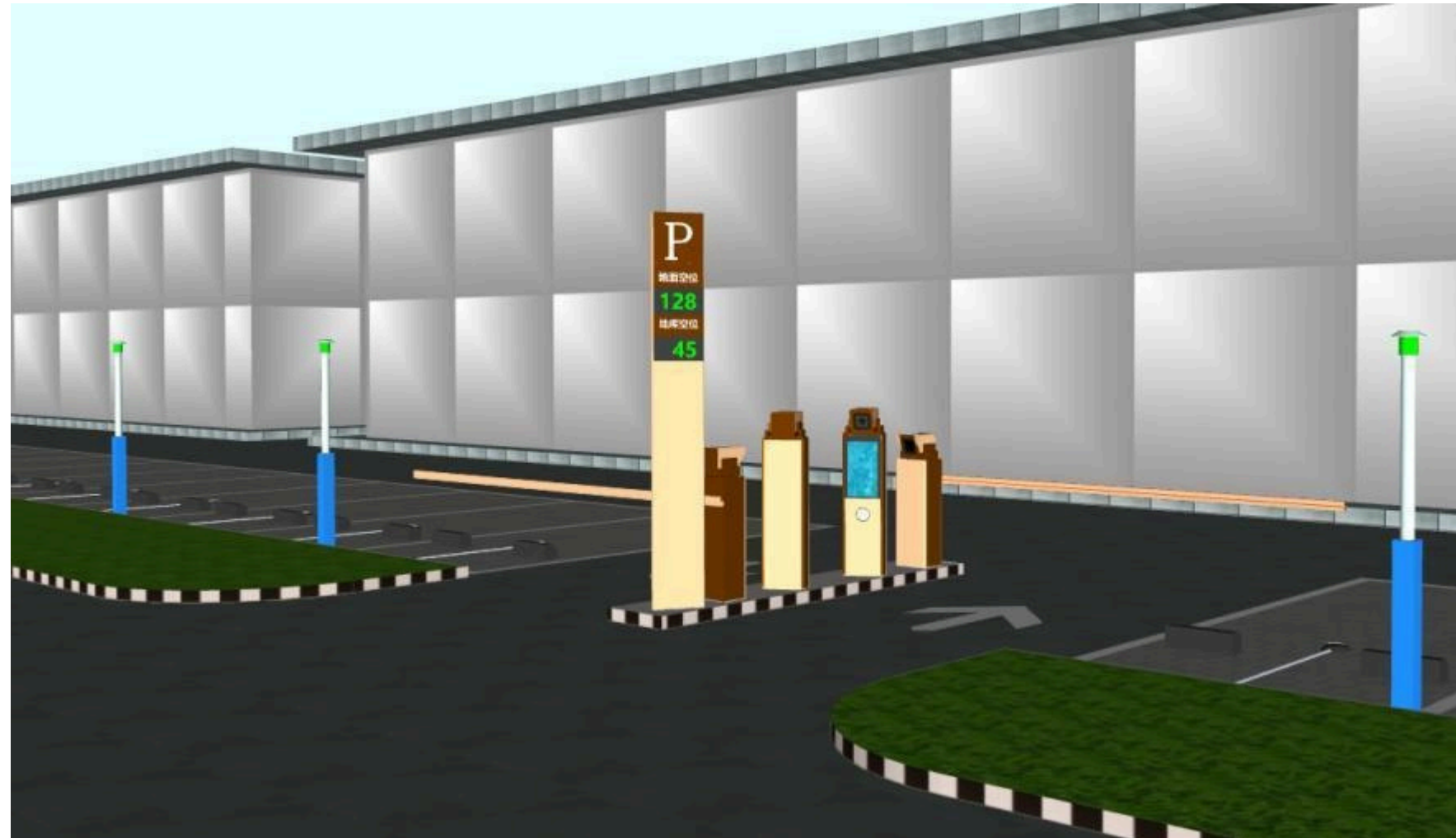
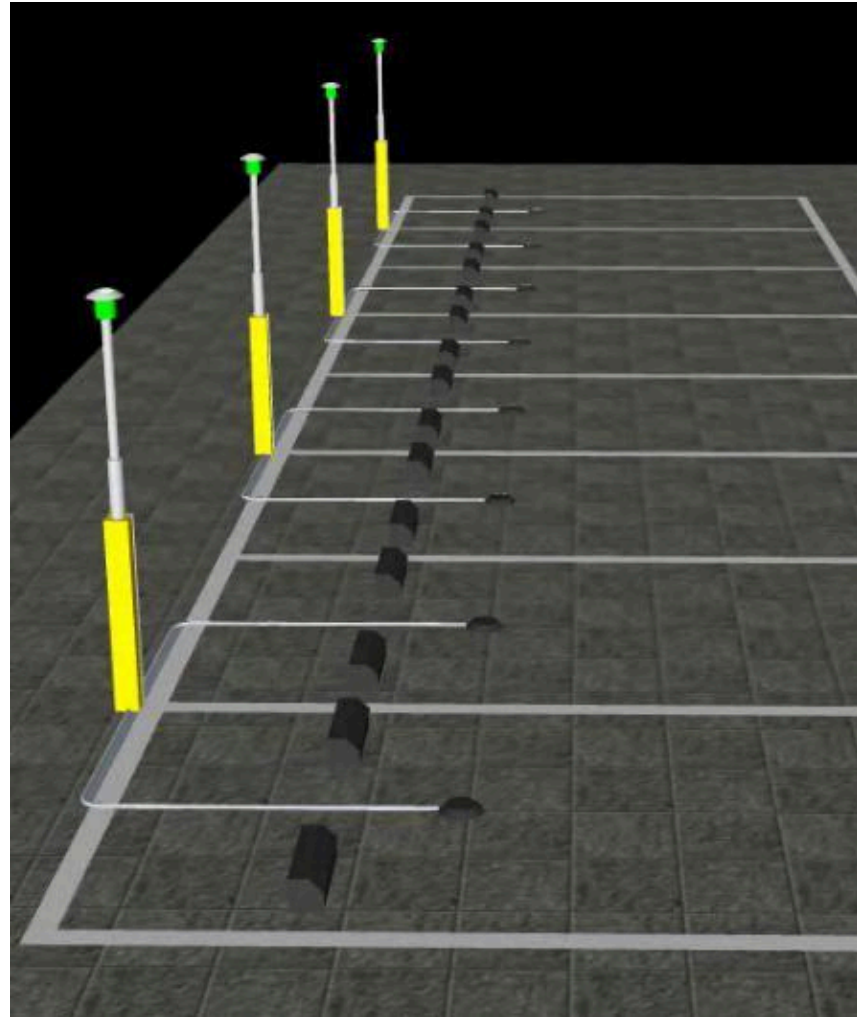


Data Statistics

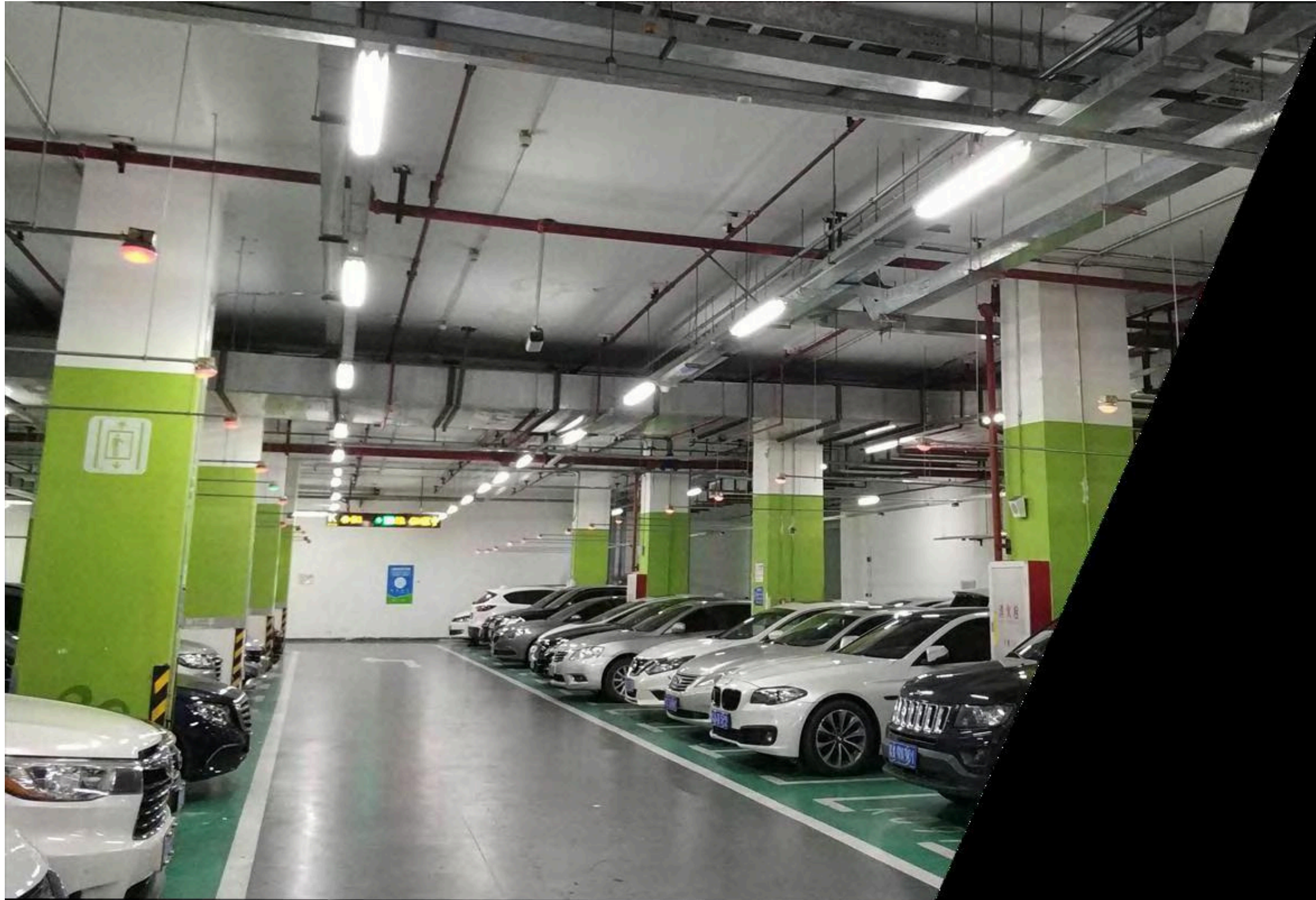
# System Structure



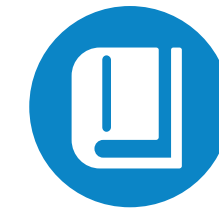
# Lamp Type Waterproof LED Indicator MIG-RP400



# Ultrasonic Parking Guidance System



With ultrasonic parking sensor, the parking guidance system can help the motorist to find the available parking space easily.



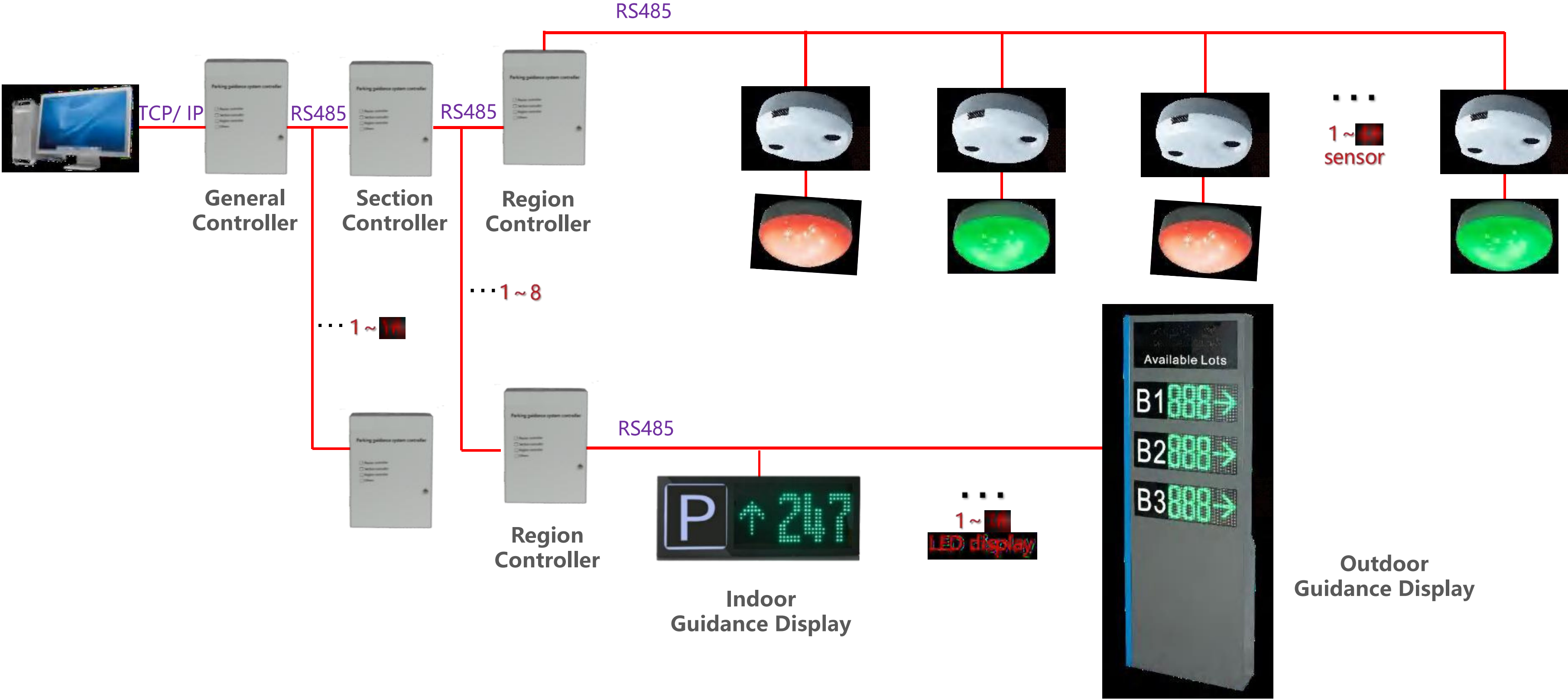
Distance

Available Parking Space



Data Statistics

# System Structure-Split Type Ultrasonic Sensor



# Video Parking Guidance System



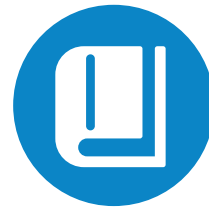
With license plate recognition on the camera sensor, the video parking guidance system can realize parking guidance and car searching both function.



**Parking Guidance**

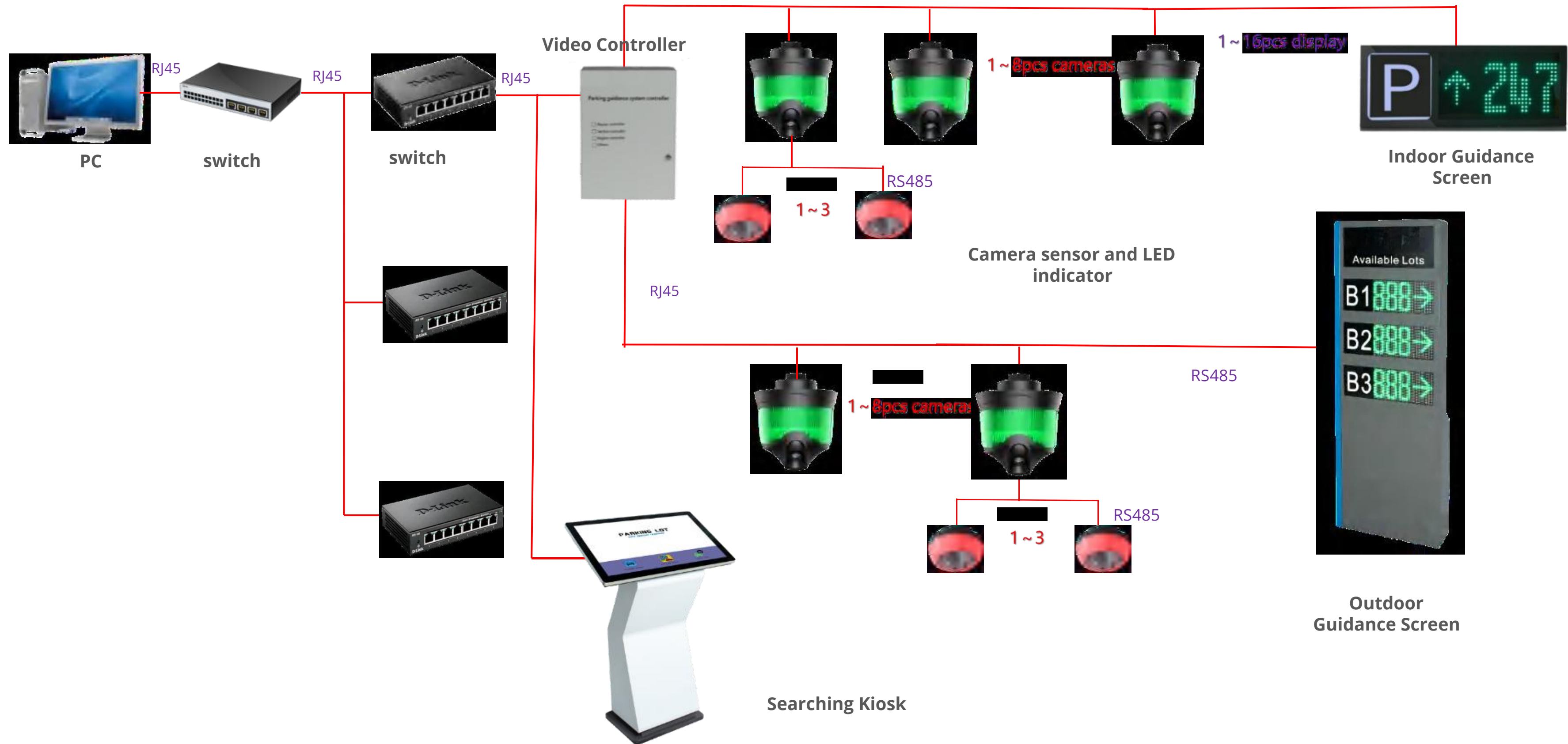


**Available Parking Space**



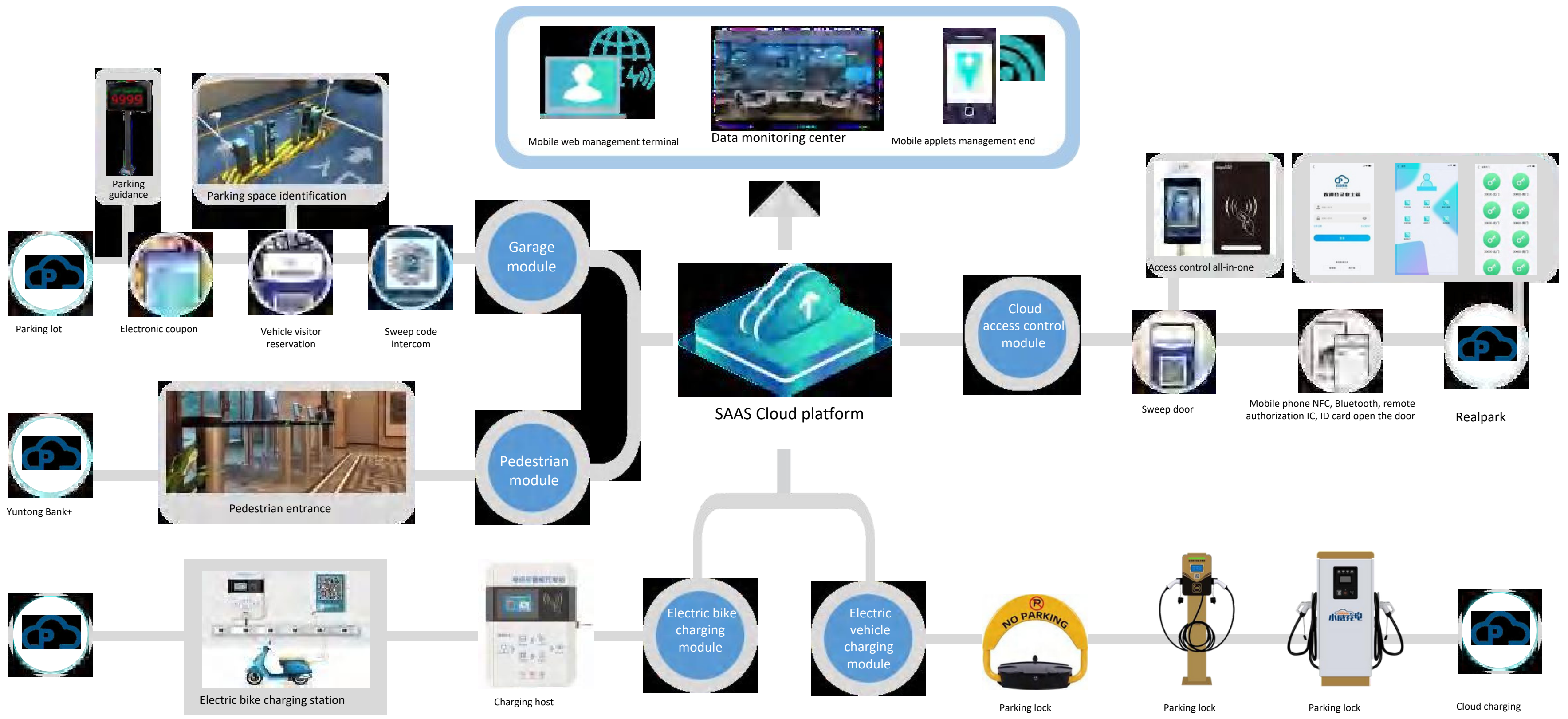
**Car Searching**

# System Structure



# Platform Intelligent Control

# Cloud Platform System Topology



# Cloud Intelligent Hosting

<https://smart.realpark.club/#/homeScreen4>

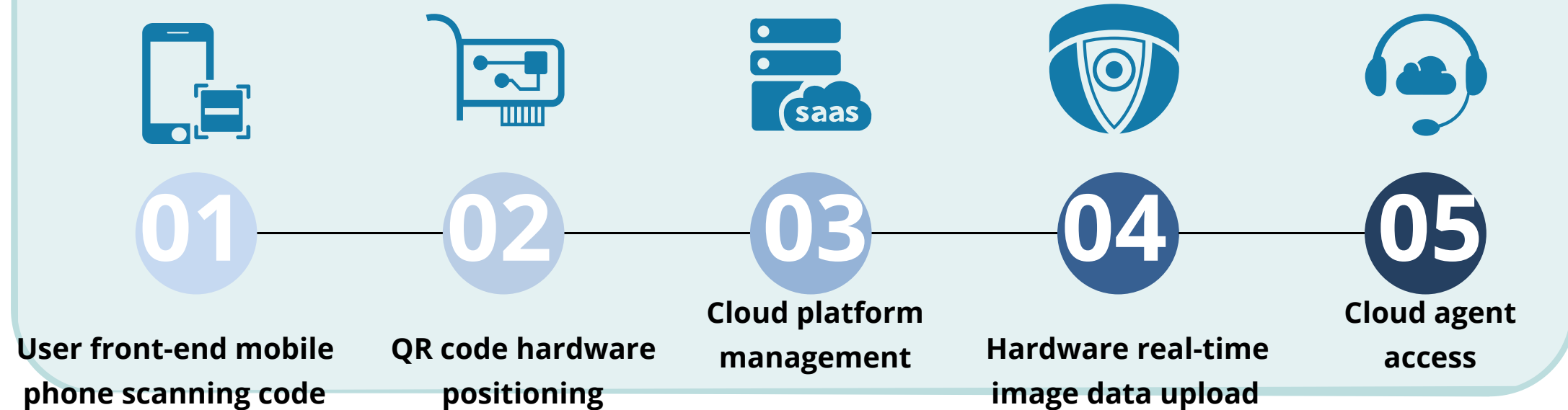
**Custom**  
Service center management  
Mobile phone management

**Operation and Maintenance (National)**  
24H remote hosting center

24-hour Service Hotline: 0086-13501586176

- Access multiple projects simultaneously
- Cloud monitoring and network disconnection reminder
- Scan code with mobile phone to call
- Audio and video real-time intercom
- Corresponding monitoring and information automatically pops up

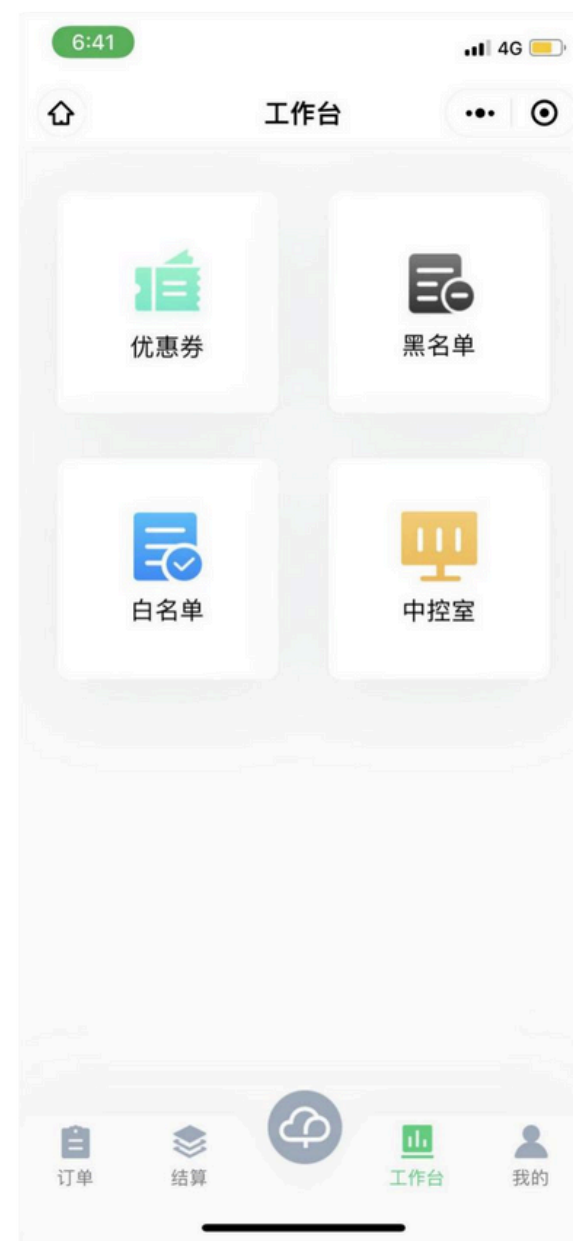
## Cloud Agent Problem Handling Process



- Intelligent question analysis tips
- Remote maintenance abnormal intervention
- Remote information modification monitoring and adjustment
- Remote customer service duty tracking
- Lock screen and hang up operation

# Mobile APP for Operator

Empower parking lot managers with remote operation capabilities



The parking lot manager can remotely manage the mobile terminal and view statistics, entry and exit, and order status; its merchants can actively enter or dynamically scan electronic offers. 41



## Smart Cloud EV Charging



### Special Lock for Charging Parking Space

Specifications: 1. Intelligent integrated transmission device, low power consumption circuit design, power saving and pressure reduction protection motor, higher degree of pressure resistance; 2. Excellent baking paint technology, better waterproof effect; high sealing waterproof gasket, waterproof ability reaches standard IP67 3. Lifting height 420mm, descending height 75mm; ambient temperature: -40°C~+85°C

### AC Charging Pile

#### Specifications

1. Output current 32A, 7kW wall-mounted AC pile-sheet metal shell (wall-mounted single and double guns)
2. Input voltage 220V, input line 6 square meters
3. Total length 5 meters (can be extended by 10 meters)
4. Waterproof and dustproof IP54, sheet metal shell.
5. Size 211\*345\*122mm (L\*W\*D) Weight 4KG
6. Model: plug and charge, card swipe billing, Ethernet billing, 4G networking billing. The wiring is single-phase 3-wire, L live wire, N neutral wire, PE ground wire



### DC Fast Charging Pile

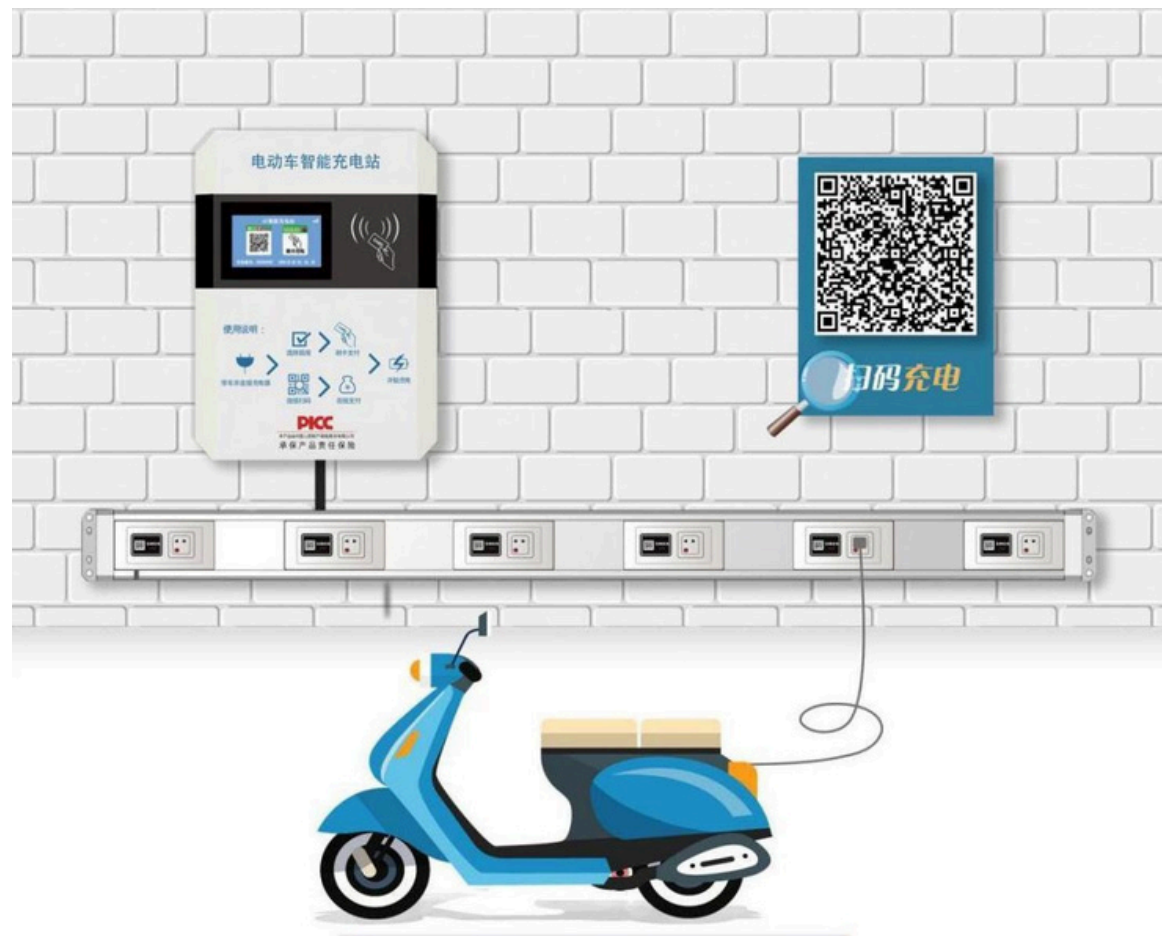
<b>Output</b>	The output voltage	50VDC~950VDC
	Output Power	30kW, 60kW, 80kW, 120kW
	Maximum current	52A~288A
	Charging efficiency	≥96%
	Protection level	IP54
<b>Basic Features</b>	Start mode	Swipe card, mobile APP, local startup, VIN startup
	Screen configuration	8-inch touch screen
	Charging interface	1~2 pieces
	Communication Interface	Ethernet/2G/3G/4G
	Operating temperature	-20°C~+50°C



# Smart Cloud Electric Bicycle Charging - Features

- + Intelligent hardware
- + Operation and maintenance services
- + AI smart charging station system platform

Free combination, One-stop Service



Charging management

Real time monitoring

Remote supervision

Policy support

...

## Intelligent Self-test

Offline Alarm

Traffic Alarm

Card Expiration Warning

Other Warning



SMS notification



WeChat notification

All parties will deal with it as soon as possible to ensure the stable operation of the electric vehicle parking lot.

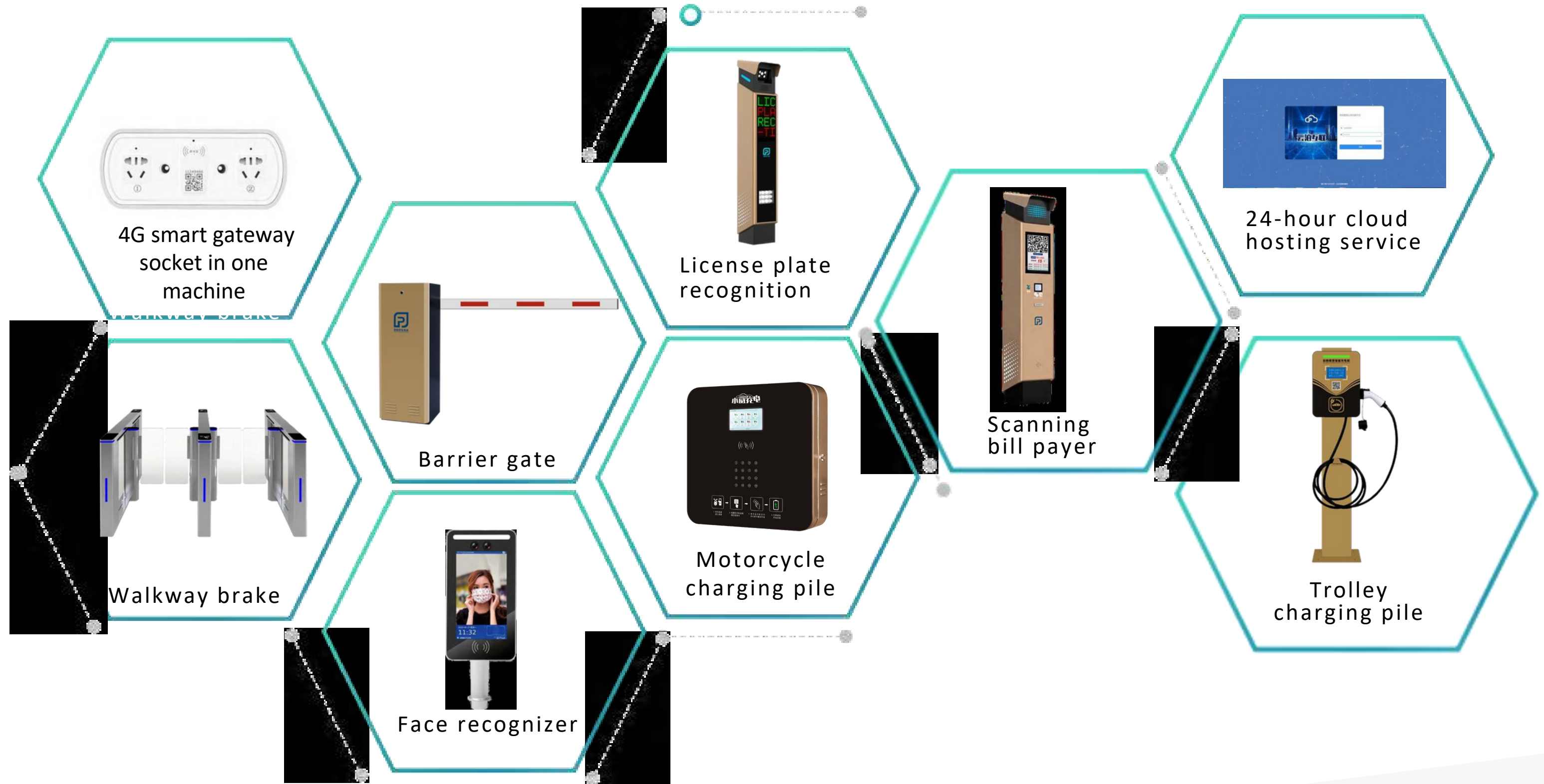
Technician

Owner

Charging Station Operator

# Series Equipment

## Function Introduction

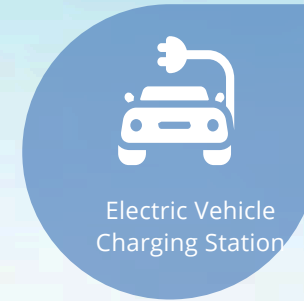


# Intelligent Park

- 01 Solve the problems of car, people, visitors, charging system and platform management in multiple parks
- 02 Solve the wiring construction problem, the equipment uses 4G communication
- 03 Solve the unattended problem of intelligent cloud parking management system
- 04 Cloud door ban system solution and accommodate new and old door ban card question
- 05 Face recognition mobile phone registration to solve the problem of no contact authorization
- 06 Solve the parking fee line to help manage and pay the fee questions
- 07 Solve the urgent question about the reservation space
- 08 Solve the long-distance parking card and renewal questions on line
- 09 Solve the real-time display problem of each area of parking space
- 10 Solve the problem of independent appointment and authorization management of temporary visitors



Park Entrance & Exit



Electric Vehicle Charging Station



Unit Entrance & Exit



Surface Parking Lot



Underground Parking Lot



Electric Bike Charging Station



Security Monitoring

# Why choose us

1. **Direct Supply from Manufacturer.** We can provide one-stop professional customized services for raw materials, hardware, software and non-standard functions according to your esteem company's projects.

2. **strong understanding and extensive experience in the parking industry.**

**strong willingness** to work closely with you and your esteem company to enhance smart parking solution for managing and monitoring parking areas efficiently , streamline the parking process for drivers

**THANK YOU**